

Question: What are possible reasons that I cannot connect to the internal web page of the 2701?

Answer: Below is a checklist for the situation where communication to the 2701 is known to be valid (simple ping command or Keithley Configuration Panel, etc.), but you cannot connect to the internal web page.

1. The page will only properly display with Internet Explorer 5.0 and above. Since the web page uses an ActiveX control, Netscape is not supported at all.
2. The other possible cause is if your Internet connection is configured to use a proxy server or a configuration script.

You can determine if you are using a proxy server by going to Internet Explorer and click on the Tools menu, then select the Internet Options. You then select the connections tab and at the lower part of the window, click on the "LAN Settings..." button which should display the window in Figure 1 below. The correct settings for use with the 2701 is to select Automatically detect settings as shown. If you are using a configuration script or a proxy server, you will have to change this setting.

Be sure to write down either the configuration script or the proxy server settings so that you can restore them when resuming normal use of the Internet on your corporate network.

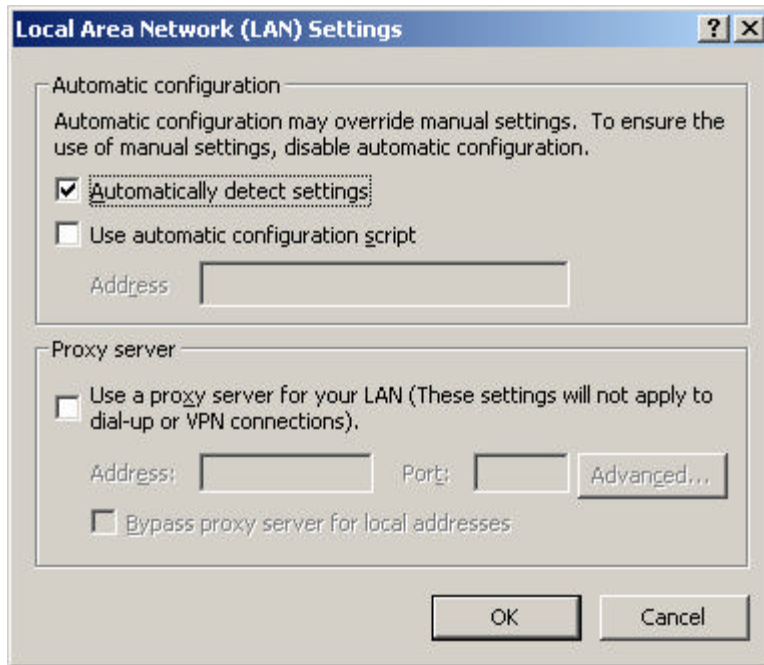


Figure 1